

Joint working arrangements for health: addressing health inequalities through inter-sectoral action

Eddie Rooney

Overview

- The public health challenge
- Health and Social Care bodies
- Inter-sectoral co-operation: a selective history
- Opportunities and challenges

The public health challenge

Highest vs Least Deprived areas

- Twice as likely to die from smoking
- Three times as likely to die from suicide
- Four times as likely to have heart or lung disease
- Five times as likely to die from alcohol or drugs
- Die 7 years earlier (Male) and 4 years earlier (Female)

Priorities for Action

- Address health inequalities at both regional and local levels including gap in life expectancy
- Halt rise in obesity
- Reduce suicides
- Reduce alcohol and drugs misuse
- 40% reduction in births to under 17s
- Reduce smoking

These issues cannot be addressed by the PHA or the health sector alone but require joint working with the wider public sector, voluntary and community sector and local communities.

HSC Roles & Responsibilities

Health & Social Care bodies

- **Public Health Agency**
Health Improvement; Tackle inequalities; Health Protection; Commissioning; Research & Devt
- **Health & Social Care Board**
Manage and improve Trusts; Commission; appoint LCGs
- **Local Commissioning Groups**
Improve health, plan & commission in local area
- **Business Services Organisation**
Admin, finance, HR, ICT, training for service
- **Patient & Client Council**
Represent interests of public, involve public in decision process

Joined-up HSC

- Shared services
- Joint management
- Pooled expertise
- Information and advice
- Collaboration
- Personal and Public Involvement
- Joint commissioning

PHA role in Commissioning

“The fundamental responsibility of the Agency in relation to commissioning is to ensure that Health and Wellbeing Improvement is adequately reflected in all aspects of commissioning and ensure that inequalities are addressed through the commissioning process”

Inter-sectoral working to address inequalities

A selective, personal sort of history

Central Government

Direct Rule:

- Social Steering Group
 - Targeting Social Need
 - Early Years; Community Development
- IDGH ↔ MGPH

Devolution

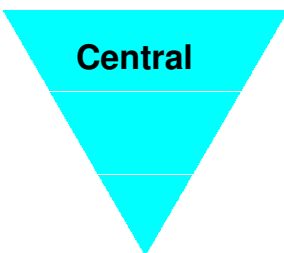
- Programme for Government
- Investing for Health (DHSSPS)
- Children's Strategy & Ministerial Group on CYP (OFMDFM)
- Neighbourhood Renewal (DSD)
- Sustainable Development (OFMDFM)
- West Belfast & Greater Shankill Taskforce
- Executive prog funds; Integrated development fund
...and about 150 others

**Joint Strategy/
Shared Values**



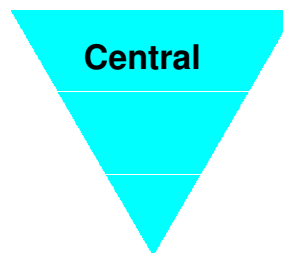
Implementation

**Joint Strategy/
Shared Values**



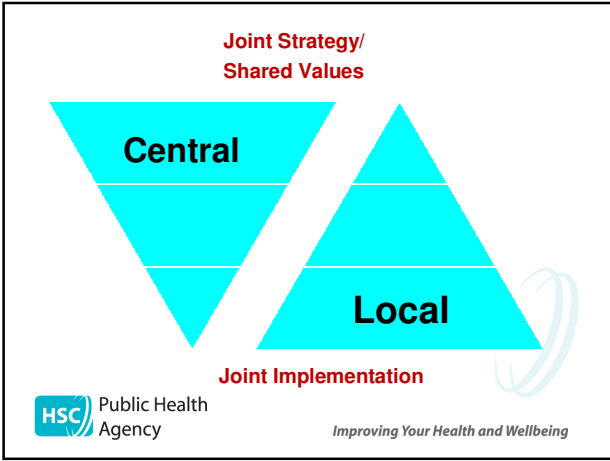
Joint Implementation

**Joint Strategy/
Shared Values**



- Relative Priority
- Accountability
- Funding

Joint Implementation

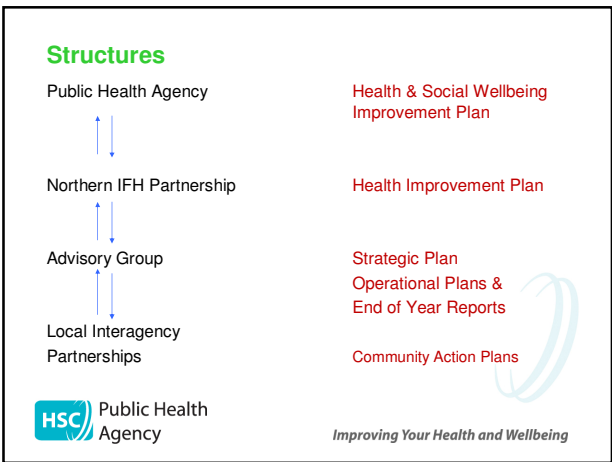
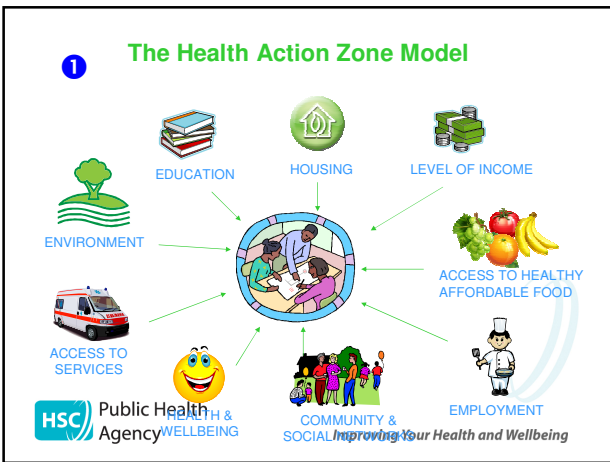


Bridging Central & Local

- IFH Partnerships; HAZ; Healthy Cities

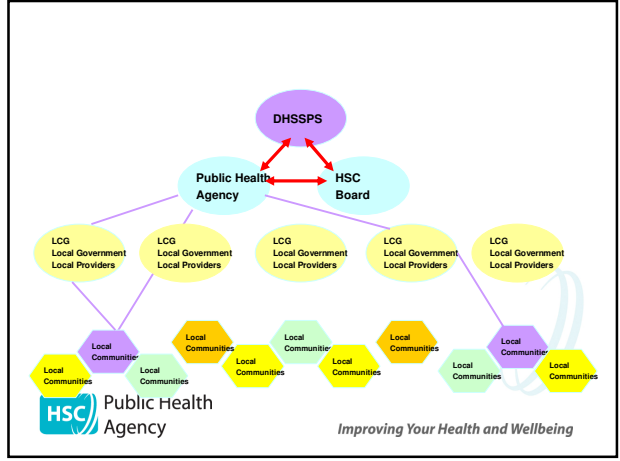
HSC Public Health Agency

Improving Your Health and Wellbeing



PHA: Building Bridges

- Across health sector through commissioning and LCG collaboration (HORIZONTAL)



PHA: Building Bridges

- Across health sector through commissioning and LCG collaboration (HORIZONTAL)
- Wider Public Sector including local government (HORIZONTAL)



PHA: Building Bridges

- Across health sector through commissioning and LCG collaboration (HORIZONTAL)
- Wider Public Sector including local government (HORIZONTAL)
- Inform, advise & assist DHSSPS & other departments (VERTICAL)



Inter-sectoral Working: Opportunities & Challenges



Opportunities

- Investing for Health II
 - link to health in all policies



Opportunities

- Investing for Health II
 - link to health in all policies
- PHA Drive on Tackling Health Inequalities
 - link to Marmot



Opportunities

- Investing for Health II
 - link to health in all policies
- PHA Drive on Tackling Health Inequalities
 - link to Marmot
- Programme for Government III

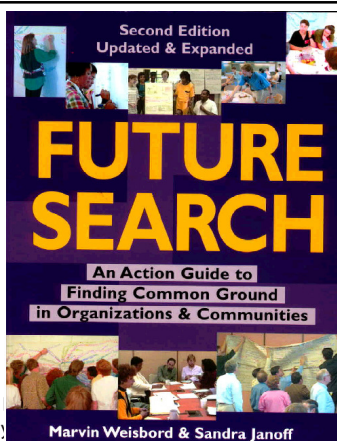


Challenges

- Experts + money = 0 (Cautionary Tales)

Challenges

- Experts + money = 0 (Cautionary Tales)
- Courage to Engage for real



Engagement Principles

- Get whole system in room
- Explore the “whole elephant”
- Share responsibility
- Find common ground
- Don't promise more than you can deliver
- ... But do deliver

Challenges

- Experts + money = 0 (Cautionary Tales)
- Courage to Engage for real
- Bite sized chunks



Challenges

- Experts + money = 0 (Cautionary Tales)
- Courage to Engage for real
- Bite sized chunks



Challenges

- Experts + money = 0 (Cautionary Tales)
- Courage to Engage for real
- Bite sized chunks
- Moving immediately with what we can do



Challenges

- Experts + money = 0 (Cautionary Tales)
- Courage to Engage for real
- Bite sized chunks
- Moving immediately with what we can do
- Keeping focus on what this is about



Northern Ireland is one of the most unequal societies in the developed world, with evidence that inequality is increasing.

(Bare necessities – Poverty and exclusion in NI 2003)

 Public Health
Agency


Improving Your Health and Wellbeing